

URBAN WATER TREATMENT UNIT

ASSUMPTIONS FOR THE FOLLOWING STANDARDS

French law: Ordinance of 24 August 2017, articles 10 2nd and 3 ° and Ordinance of 31 July 2020, articles 17 1st and 2nd

PLACEMENT	"GROSS LOAD of organic pollution produced by the sanitary agglomerate in kg / day of BOD ₅ "	Maximum concentration to be respected, daily average	MINIMUM YIELD to reach, daily average	CONCENTRATION prohibitive , daily average
BOD5	<120	35 mg (O ₂) / l	60%	70 mg (O ₂) / l
	≥ 120	25 mg (O ₂) / l	80%	50 mg (O ₂) / l
COD	<120	200 mg (O ₂) / l	60%	400 mg (O ₂) / l
	≥ 120	125 mg (O ₂) / l	75%	250 mg (O ₂) / l
MES (*)	<120	/	50%	85 mg / l
	≥ 120	35 mg / l	90%	85 mg / l

Compliance with the rejection level for the MES parameter is optional in the performance compliance judgment.

A population equivalent (PE) is:

Settings	Unit	Values
debt	l / EH	150
BOD5	g / g / PE	60
MY	g / g / PE	90
NOT	g / g / PE	15
P.	g / g / PE	5
COD	g / g / PE	120

Waste Water Box

DIMENSIONS



WOOD RANGE

First name	EXTERNAL DIMENSIONS (mm)			INTERNAL DIMENSIONS (mm)				AREA / VOLUME	
	Length	Length	Height	Length	Length	Water height - High level	height contrast	Footprint (m2)	Round volume (m3)
WWB-B60	5045	5045	4850	4393	4393	3300	480	25	60
WWB-B80	6445	5045	4850	5793	4393	3300	480	33	80
WWB-B110	6445	6445	4850	5793	5793	3300	480	42	110
WWB-B140	7845	6445	4850	7193	5793	3300	480	51	140
WWB-B160	9245	6445	4850	8593	5793	3300	480	60	160
WWB-B200	9245	7845	4850	8593	7193	3300	480	73	200



RANGE OF CONTAINERS

First name	EXTERNAL DIMENSIONS (mm)			INTERNAL DIMENSIONS (mm)				AREA / VOLUME	
	Length	Length	Height	Length	Length	Water height - High level	height contrast	Footprint (m2)	Round volume (m3)
WWB-C30	5600	2150	2300	4800	2130	1700	300	12	20
WWB-C50	11800	2150	2300	11000	2130	1700	300	25	40
WWB-C60	11800	2150	2600	11000	2130	2000	300	25	50



BIODISKS RANGE

First name	EXTERNAL DIMENSIONS (mm)		AREA / VOLUME	
	Length	Length	Height	Footprint (m2)
WWB-BL-500	4900	2270	2930	11
WWB-BL-1000	5400	2270	2930	13
WWB-BL-1500	6400	2270	2930	15
WWB-BL-2000	7500	2270	2930	17
WWB-BL-3000	9300	2270	2930	21
WWB-BL-3500	10000	2270	2930	23
WWB-BL-4000	10900	2270	2930	25

Waste Water Box

EQUIVALENT POPULATION

First name	70	100	125	200	250	300	400	500	600	700	800	900	1000	1100	1200	1300	1400
WWB-B60							■										
WWB-B80								■									
WWB-B110									■	■							
WWB-B140											■	■					
WWB-B160													■	■			
WWB-B200															■	■	■
WWB-C30	■	■	■														
WWB-C50				■	■												
WWB-C60						■											
WWB-BL-500	■																
WWB-BL-1000			■														
WWB-BL-1500				■													
WWB-BL-2000					■												
WWB-BL-3000						■											
WWB-BL-3500							■										
WWB-BL-4000								■									

Waste Water Box

FLOW-LOAD

First name	Daily flow m ³ / g	Hourly flow m ³ / h	Peak flow m ³ / h	BOD5 load / g
WWB-B60	60	2.50	7.00	24
WWB-B80	75	3.10	9.00	30
WWB-B110	90-105	3.8-4.4	10-11	36-42
WWB-B140	120-135	5-5.6	13-14	48-54
WWB-B160	150-165	6.3-6.9	15-16	60-66
WWB-B200	180-210	7.5-8.8	18-20	72-84
WWB-C30	10.5-18.75	0.4-0.8	2-3	4.2-7.5
WWB-C50	30-37.5	1.3-1.6	4-5	12-15
WWB-C60	45	1.90	6.00	18
WWB-BL-500	10.5	0.40	2.00	4.2
WWB-BL-1000	18.75	0.80	3.00	7.5
WWB-BL-1500	30	1.30	4.00	12
WWB-BL-2000	37.5	1.60	5.00	15
WWB-BL-3000	45	1.90	6.00	18
WWB-BL-3500	60	2.50	7.00	24
WWB-BL-4000	75	3.10	9.00	30

Waste Water Box

PUBLIC PRICE



WOOD RANGE

First name	Price to the public € HT
WWB-B60	200,100
WWB-B80	208.150
WWB-B110	220,800
WWB-B140	236.900
WWB-B160	244.950
WWB-B200	254.150



RANGE OF CONTAINERS

First name	Price to the public € HT
WWB-C30	138,000
WWB-C50	159,850
WWB-C60	162.150



BIODISKS RANGE

First name	Price to the public € HT
WWB-BL-500	97.750
WWB-BL-1000	105,800
WWB-BL-1500	120,750
WWB-BL-2000	138,000
WWB-BL-3000	166,750
WWB-BL-3500	195,500
WWB-BL-4000	216.2 00

Waste Water Box

DETAILS



WWB-B60 A 200 WOOD RANGE

Design and engineering studio.

Technical documentation.

Plans and user manuals

Supply of waste water treatment units

STEP compact wooden structure including:

- 1 set of wooden panels
- 1 set of plates, support, tie rods, fixing
- 1 waterproofing complex for geomembrane
- Concrete for fixing the equipment to the bottom of the pool

Purification Equipment:

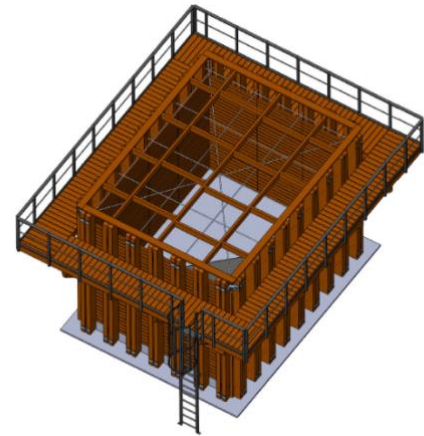
- 1 Unibiocell drain siphon
- 1 Siphon electrical panel
- 1 Sludge extraction pump
- 1 ORP probe
- 1 Hydrostatic probe
- 3 tier pears
- 1 blower
- 1 Ventilation unit with ramps and diffuser discs
- 1 Set of inlet and outlet fittings for effluents and sludge

Blacksmith:

- 1 straight ladder
- 1 set of composite railings
- 1 set of walkways around the tank

Electricity and automation:

- Electrical cabinet with programmable automation
- Equipment wiring



STANDARD QUOTE

Description	Unit of measure	Quantity	TOTAL HT
WASTEWATER BOX			
Supply of domestic wastewater treatment units	Unit	1	Understood
STEP compact wood WWB110 with equipment: - 1 Wooden basin 6445x6445x4850			
Purification Equipment: - 1 UniBioCell drain siphon - 1 Siphon electrical panel - 1 hydrostatic probe - 1 sludge extraction pump - 1 ORP probe - 3 tier pears - 1 blower - 1 Aeration group with ramps and fine bubble diffuser discs			
Blacksmith: - 1 straight ladder - 1 set of railings - 1 gateway			
Electricity and automation: - Electrical cabinet - Equipment wiring			
INSTALLATION TO GET STARTED			
Commissioning and training - Daily package for a commissioner and trainer Travel expenses (accommodation, meals, transport, etc.) ARE NOT INCLUDED in the package	days)	5	Understood
Execution study included - Preparatory / implementation study - Calculation note and execution plans - Detail plans of the equipment - Instructions for installation, commissioning, operation, maintenance	Unit	1	Understood
Supervision of the installation - Daily flat rate for a supervisor for installation and finishing during commissioning Travel expenses (accommodation, catering, transport, etc.) ARE NOT INCLUDED in the flat rate	days)	20	Understood
TOTAL Exit from the factory			To define

OPTIONS	
PRE-TREATMENT	To be defined if necessary
LIFT	To be defined if necessary
SLUDGE STORAGE	To be defined if necessary
REFUGE EQUIPMENT	To be defined if necessary

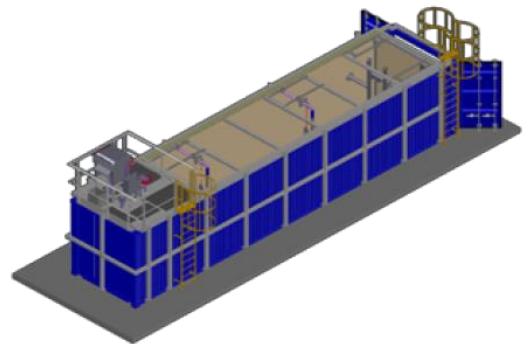


WWB CONTAINER RANGE from C30 to 60

Design and engineering studio.
Technical documentation.
Plans and user manuals.

Supply of waste water treatment units
Compact containerized WWTP consisting of:

- 1 tank container
- Internal coating: 2 coats of epoxy - 250 μ
- External coating: 2 epoxy layers and 1 acrylic layer - 150 μ



Purification Equipment:

- 1 UniBioCell drain siphon
- 1 Siphon electrical panel
- 1 Sludge extraction pump
- 1 ORP probe
- 1 Hydrostatic probe
- 3 tier pears
- 1 blower
- 1 Aeration group with ramps and fine bubble diffuser discs
- 1 Set of inlet and outlet fittings for effluents and sludge



Blacksmith:

- 1 straight ladder
- 1 set of railings
- 1 integrated technical room to house the equipment

Electricity and automation:

- Electrical cabinet with programmable automation
- Equipment wiring

STANDARD QUOTE

Description	Unit of measure	Quantity	TOTAL HT
WASTEWATER BOX			
Supply of domestic wastewater treatment units	Unit	1	Understood
WWB C60 compact containerized STEP 40 feet including: - 1 container tank 215x1180x260 cm			
Purification Equipment: - 1 UniBioCell drain trap. - 1 Siphon electrical panel - 1 Hydrostatic probe - 1 Sludge extraction pump - 1 ORP probe - 3 tier pears - 1 blower - 1 Aeration group with ramps and fine bubble diffuser discs			
Blacksmith: - 1 straight ladder - 1 set of railings - 1 room			
Electricity and automation: - Electrical cabinet - Equipment wiring			
INSTALLATION TO GET STARTED			
Commissioning and training - Daily package for a commissioner and trainer Travel expenses (accommodation, meals, transport, etc.) ARE NOT INCLUDED in the package	days)	5	Understood
Execution study included - Preparatory / implementation study - Calculation note and execution plans - Detail plans of the equipment - Instructions for installation, commissioning, operation, maintenance	Unit	1	Understood
Supervision of the installation - Daily flat rate for a supervisor for installation and finishing during commissioning Travel expenses (accommodation, catering, transport, etc.) ARE NOT INCLUDED in the flat rate	days)	5	Understood
TOTAL Exit from the factory			To define

OPTIONS	
PRE-TREATMENT	To be defined if necessary
LIFT	To be defined if necessary
SLUDGE STORAGE	To be defined if necessary



WWB BL500 TO 4000 BIODISC RANGE

Design and engineering studio.
Technical documentation.
Plans and user manuals.

Supply of wastewater treatment units STEP compact
Biodisc Consisting of:

- Steel frame
- Glass fiber reinforced polyester
- Primary lamellar settling tank and sludge storage
- Aerobic reactor
- Lamellar clarifier
- Sludge recirculation pump
- Electrical cabinet



STANDARD QUOTE

Description	Unit of measure	Quantity	Total HT
BOX OF WASTEWATER			
Supply of domestic wastewater treatment units	Unit	1	Understood
Compact STEP Biodisc WWB BL3500 including: - 1 tank 10000x2270x2930 in FRP			
Purification Equipment: - Primary lamellar settling tank and sludge storage - Aerobic reactor with single-phase motor - Lamellar clarifier - Single-phase sludge recirculation pump - Sludge storage autonomy 3 months			
Electricity and automation: - Electrical cabinet - Equipment wiring			
INSTALLATION TO GET STARTED			
Commissioning and training - Daily package for a commissioner and trainer Travel expenses (accommodation, meals, transport, etc.) ARE NOT INCLUDED in the package	days)	5	Understood
Execution study included - Preparatory / implementation study - Calculation note and execution plans - Detail plans of the equipment - Instructions for installation, commissioning, operation, maintenance	Unit	1	Understood
Supervision of the installation - Daily flat rate for a supervisor for installation and finishing during commissioning Travel expenses (accommodation, catering, transport, etc.) ARE NOT INCLUDED in the flat rate	days)	5	Understood
TOTAL HT Depending on the model			To define

OPTIONS	
PRE-TREATMENT	To be defined if necessary
LIFT	To be defined if necessary

