



To have a positive impact in the world

avoiding CO2 emissions and expanding digitalization



Omnidirectional Technology

FOR INCONSISTENT WIND



Solar Power

High Efficiency Solar Cells
23.5% Efficiency

Wind Power

Vertical Axis technology
Silent

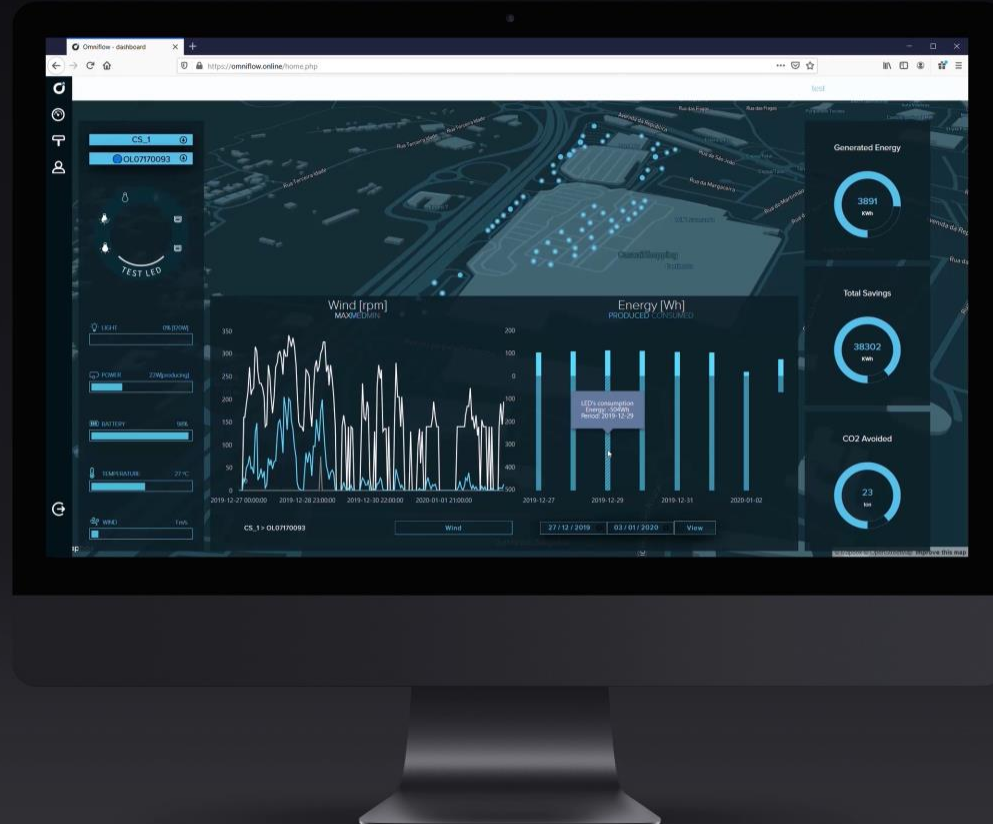
Built in Batteries

Continuous Power for multiple applications
Out of the box ready solution

OMNICONNECT

IoT Monitor and Control
AI algorithms





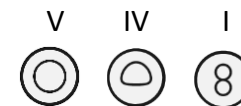
Efficient Lighting

30W for 5310 lm
180W version with 25260 lm
4000K light temperature

CREE XP-G3 LED or
SAMSUNG LH351B

More Light Patterns

Possible Lighting patterns :

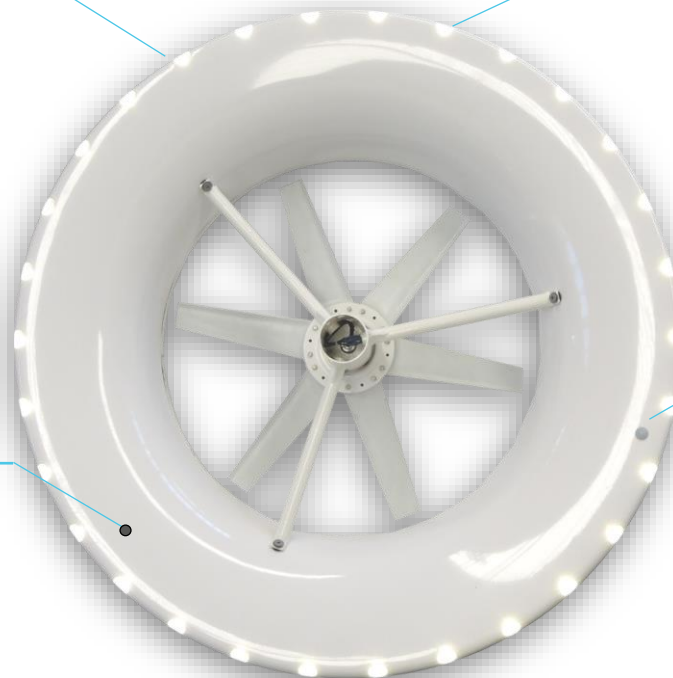


Motion Sensor

Infrared motion sensor
Enables dimming feature
or camera activation

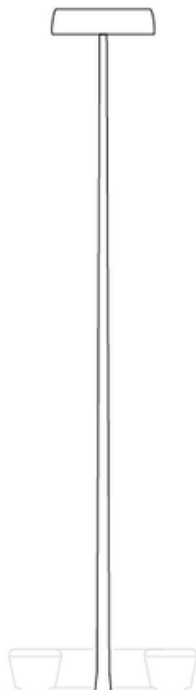
IP Security Camera

Optical or Thermal
Integrated Design
Enables Smart Analytics for:
Smart Parking, People Counter, etc



Omniled 07

Pole height 8m



Omniled 035

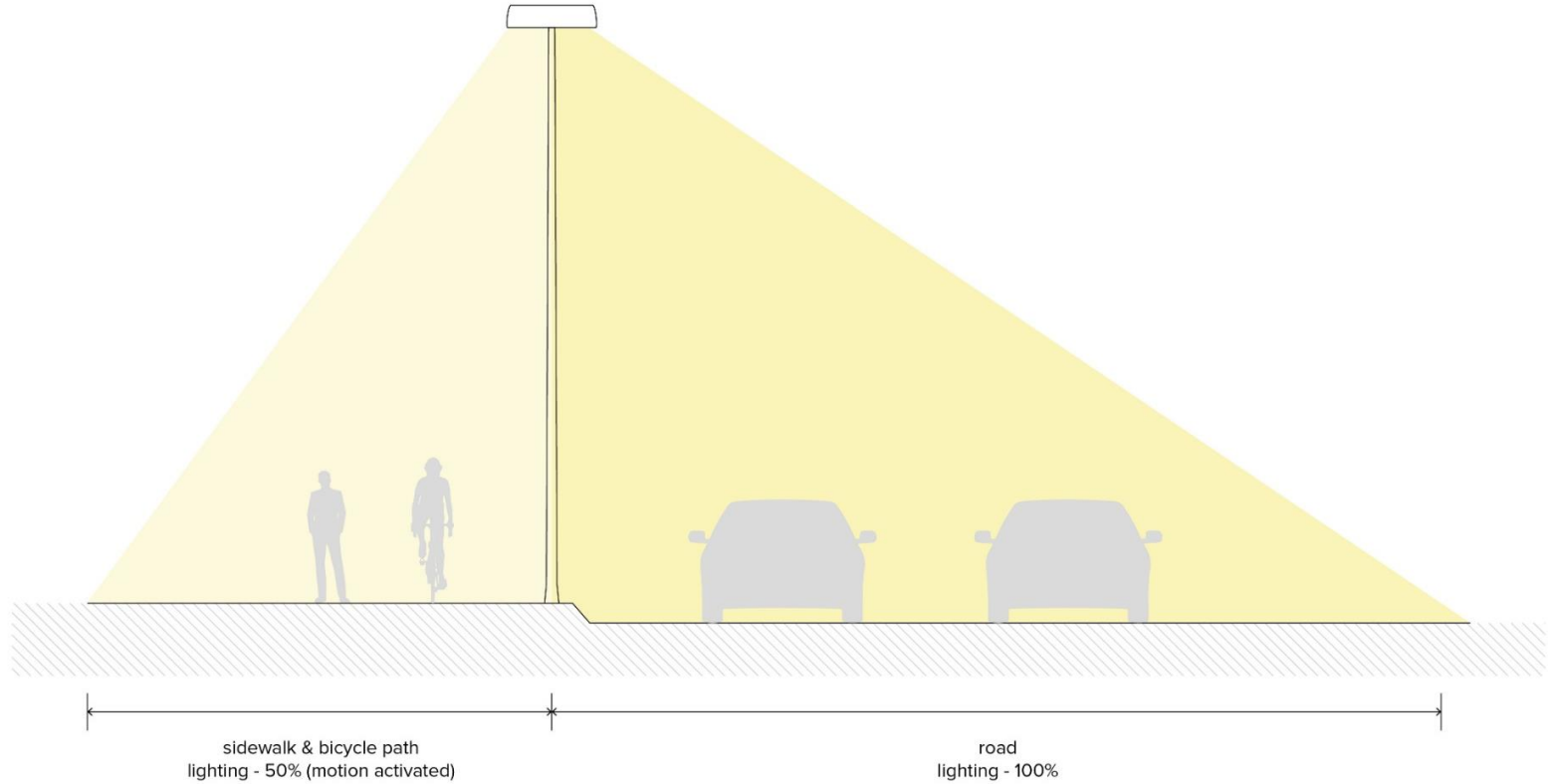
Pole height 4m



Omnibench

2 modules



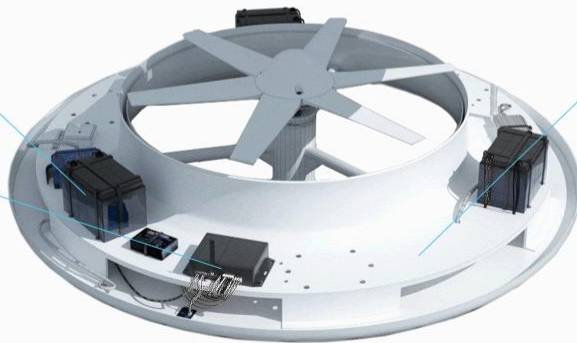


Built in Battery Pack

3x 12V 14Ah Lead Crystal
500 Wh Storage

OMNIBRAIN

Connectivity to internet
Monitoring and control
Adaptive programming thru **AI and weather forecasts**
Connectivity via NB IoT | 4G CAT M1 | LoRaWan



Space for optional Applications

IP Security Camera
Edge Computing | AI
Small Cell - 5G / LTE
Public WIFI
USB Charging Station
Integrated MIC / Speakers
Air Quality sensors

....



OMNIFLOW SMART POLE

Vertical wind turbine
Solar photovoltaic
Battery storage



AIR QUALITY SENSORS

CO, NO₂, O₃, PM, SO₂, Noise level



CALL BUTTON

High quality video and audio
Facial recognition and other analytics possible



EV CHARGER

Most integrated EV Charger



INTEGRATED SERVICES

Ultra efficient LED system
4 x IP cameras, full field of view
Wi-Fi | 5G | LTE Small Cell
Audio for PA
Edge computing
IoT cloud based control system
Landing & charging pad for autonomous drones

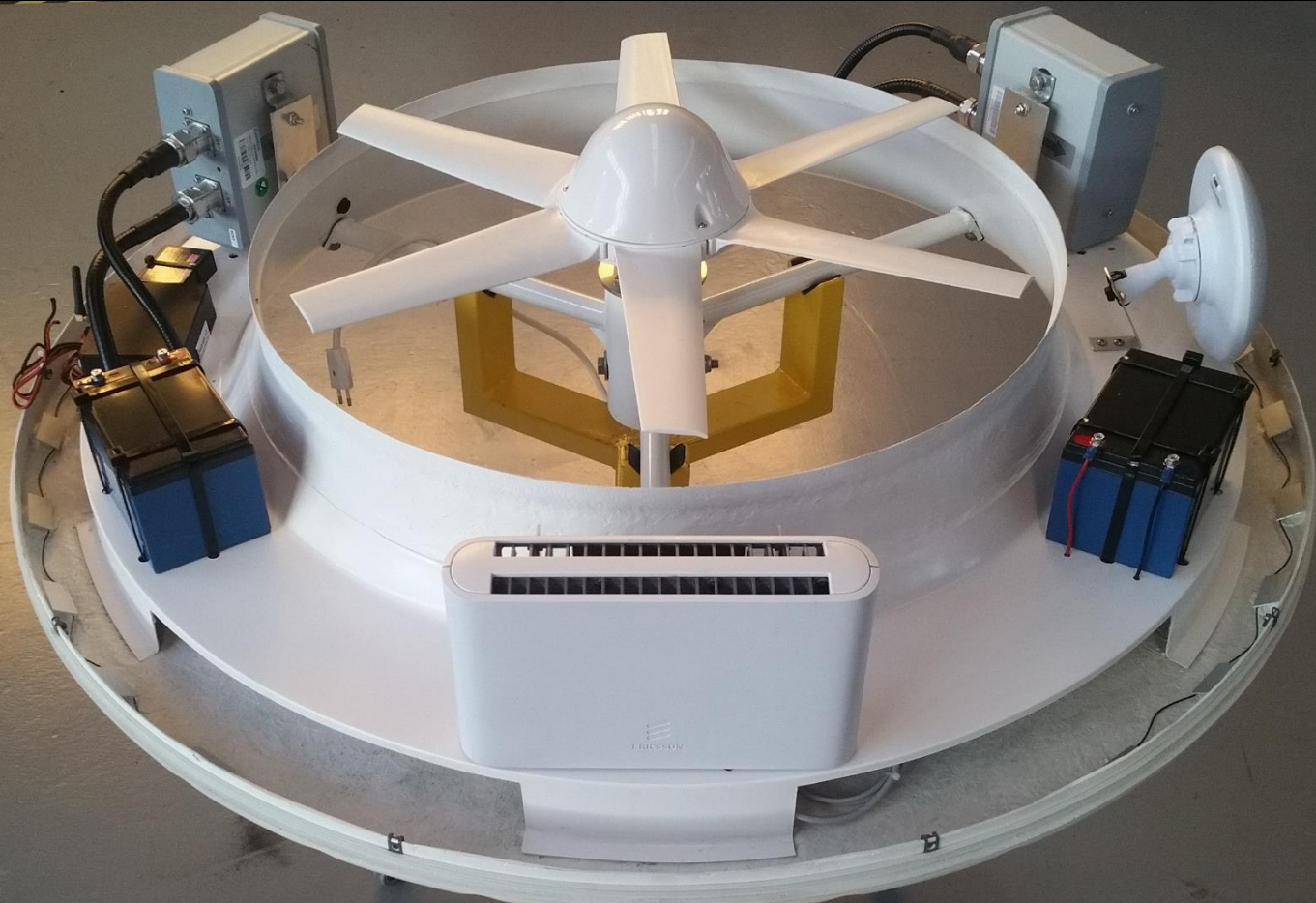


INTERACTIVE DISPLAY

Capacitive Touch Screen
Audio system





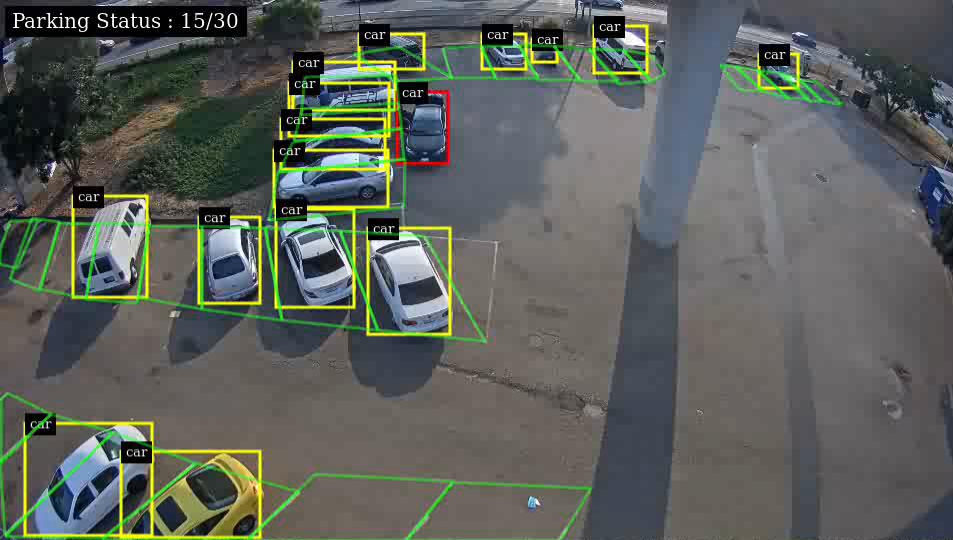


RED BY **Omniflow**

A close-up photograph of a white, curved camera housing. The text "RED BY" is partially visible on the left, followed by the "Omniflow" logo in a bold, black, sans-serif font. The logo's "O" features a blue and white geometric icon. Below the text, a silver screw is visible. Further down, a horizontal row of four circular openings is embedded in the white surface. The central opening is covered by a black, hexagonal cap, while the other three are open, revealing internal components. The surface is highly reflective, showing bright highlights and distorted reflections of the surrounding environment, which appears to be an industrial or laboratory setting with yellow structural elements visible at the bottom.



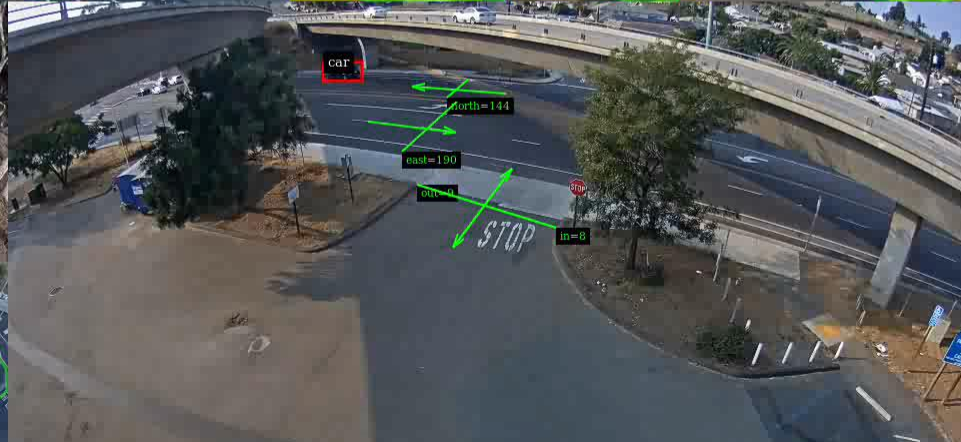
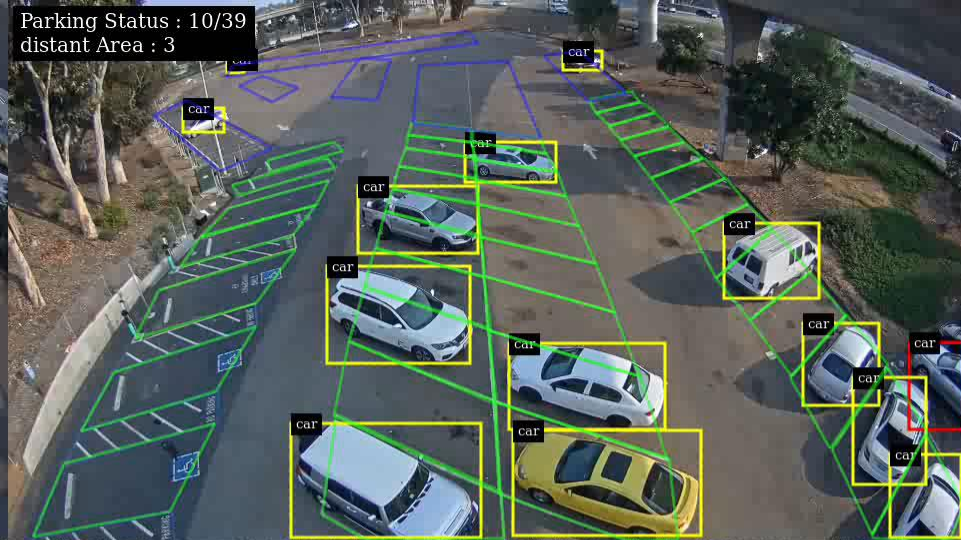
Parking Status : 15/30

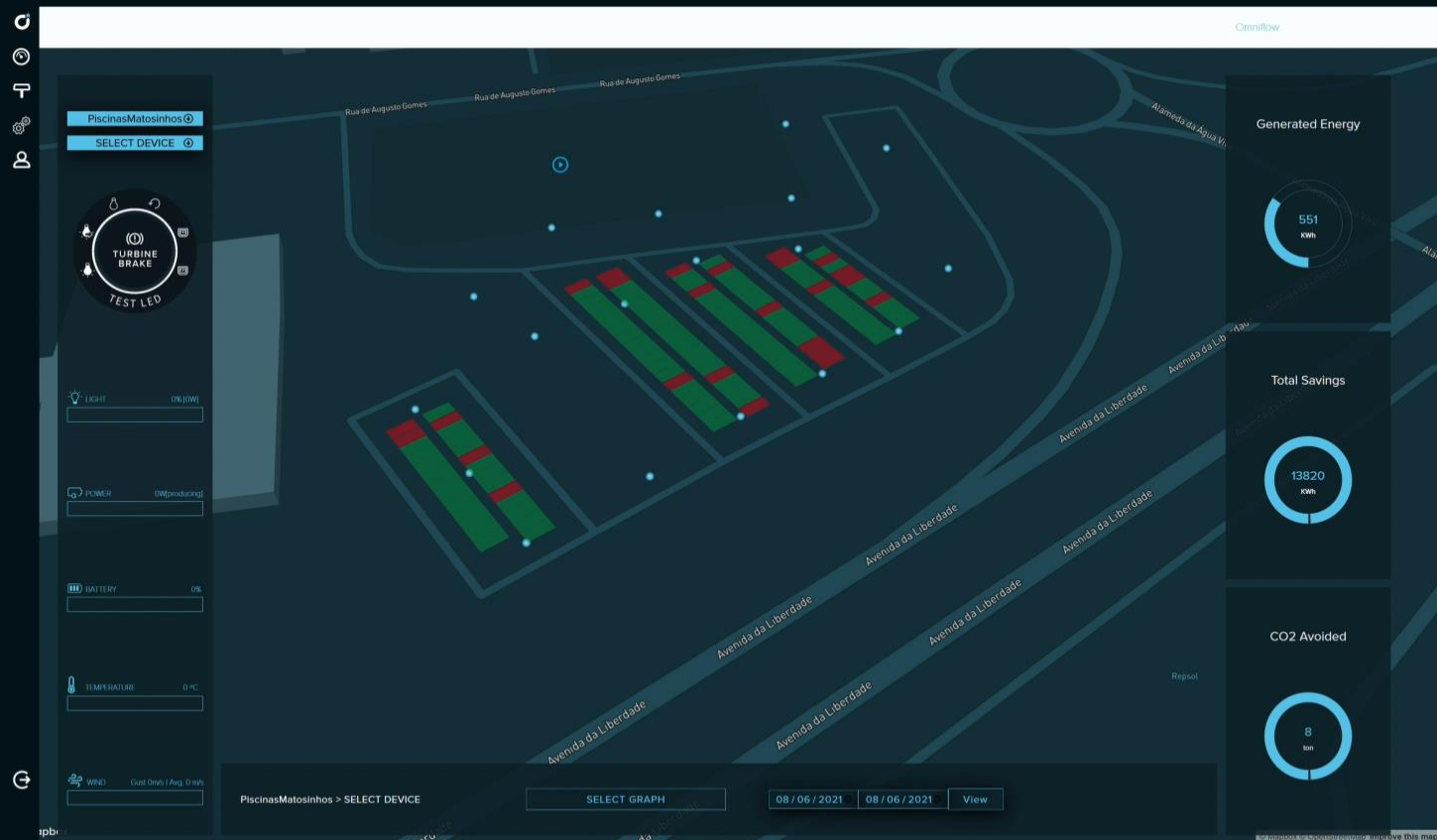


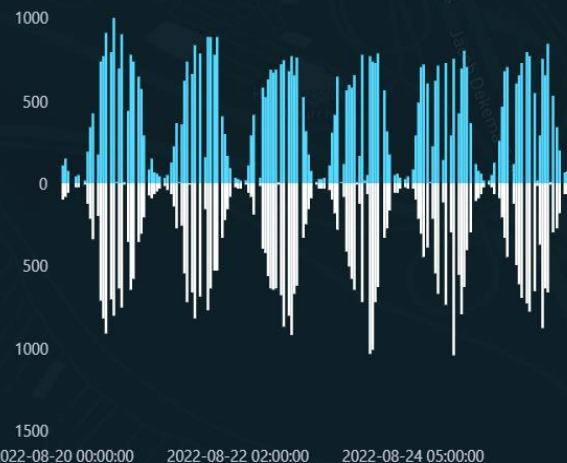
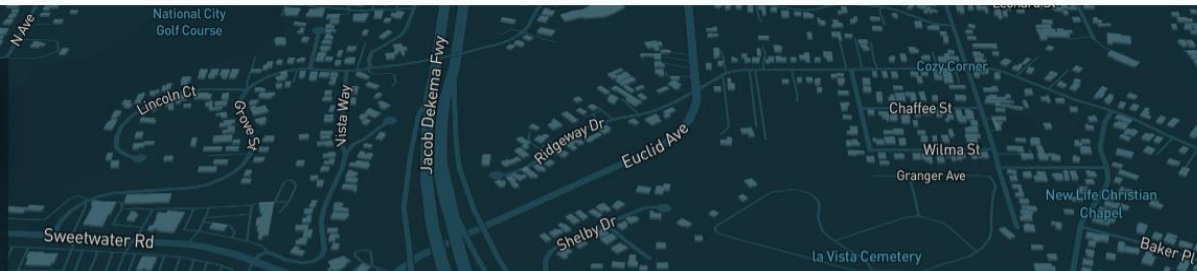
Parking Status : 0/6



Parking Status : 10/39
distant Area : 3





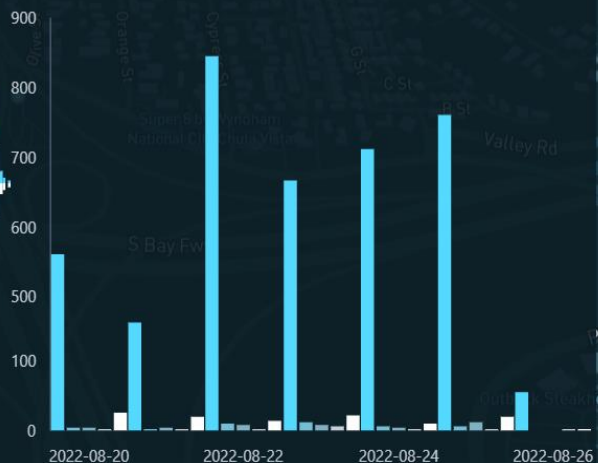


Caltrans_Sweetwater Park and Ride >
OL07190159

Traffic Flow

Vehicle Type/Per Day [N°]

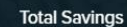
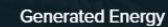
Car Bus Truck Motorcycle Pedestrian

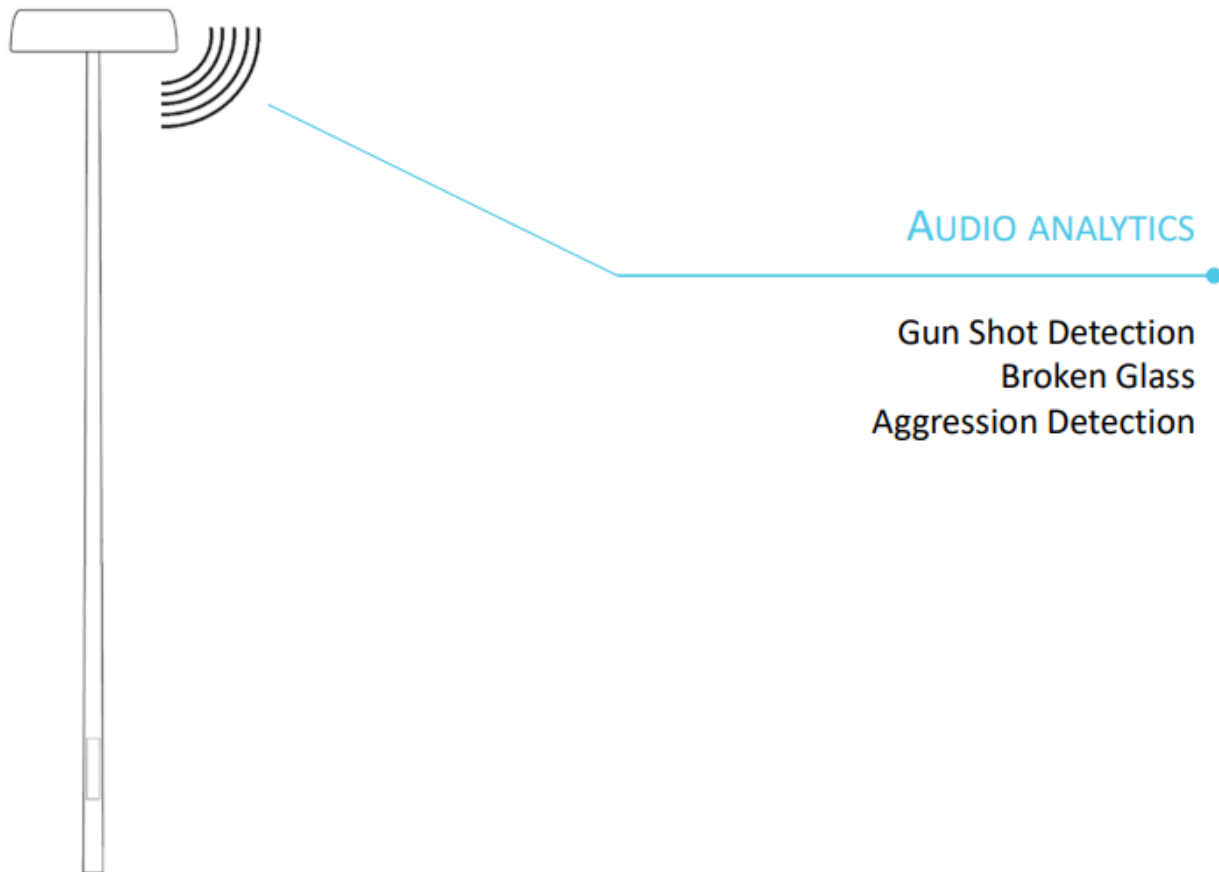


20/08/2022

26/08/2022

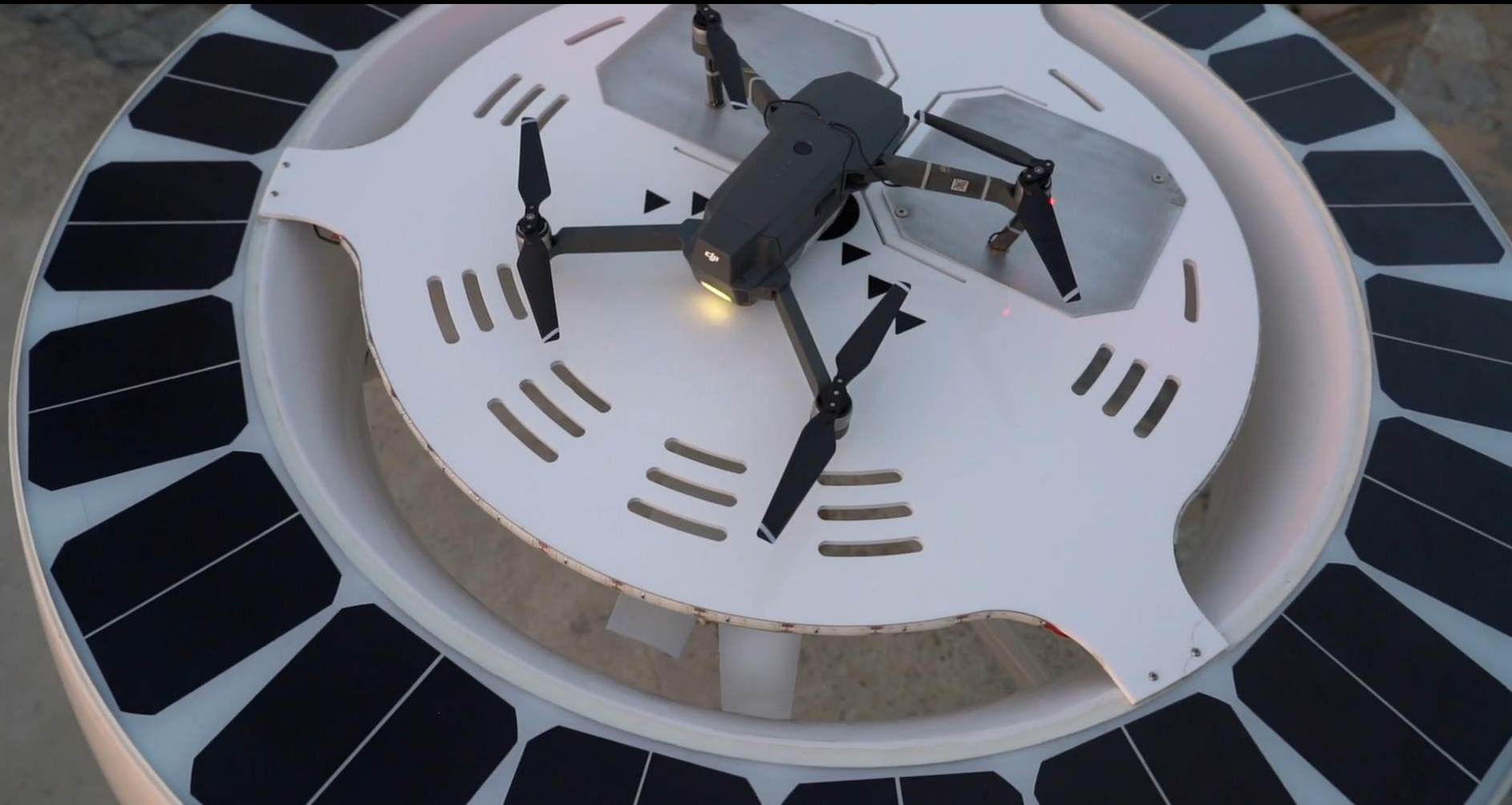
View



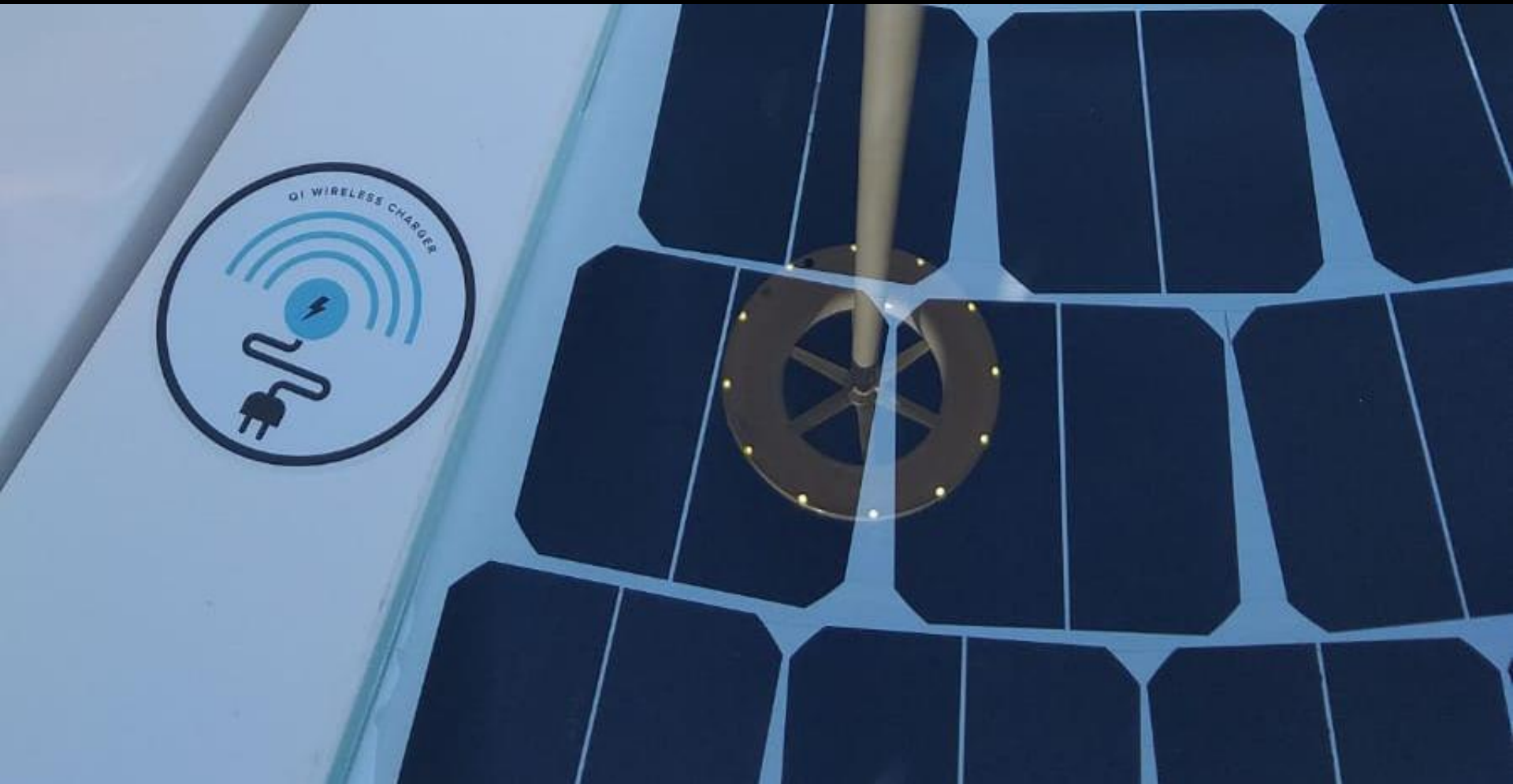










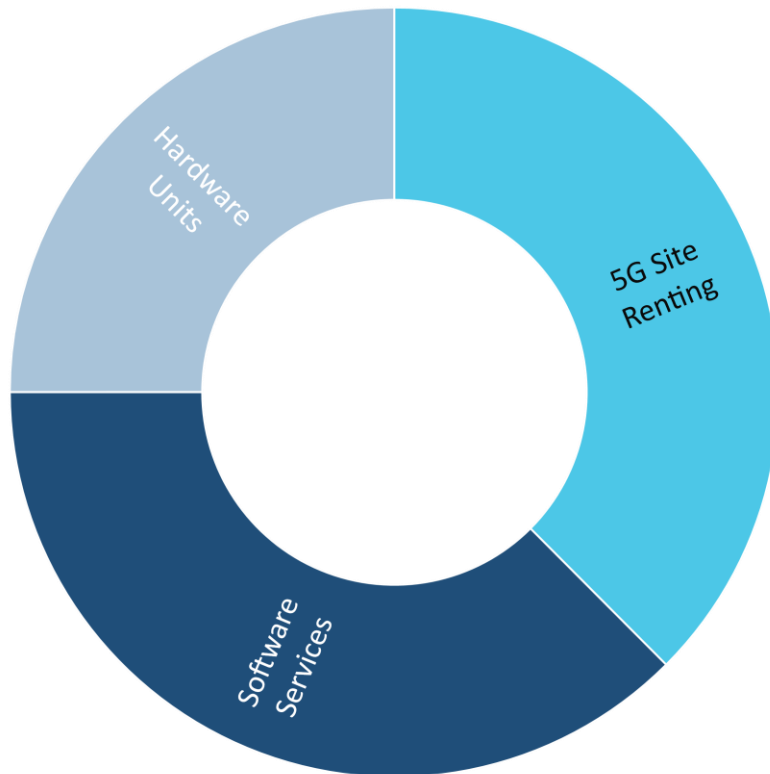


>90% ENERGY REDUCTION ON LIGHTING

+ ADDED VALUE SOFTWARE/SERVICES (5G , DATA , EV...)

Private Sector

- Supermarket/Mall Chains
- Real Estate Developers
- Energy Corporates
-



Public Sector

- Municipalities/councils
- Road Authorities
- BUS/Rail/Airports/ Operators
-







SMART ENERGY
DECISIONS
INNOVATION
AWARDS 2019

Government Onsite
Renewable Energy

CITY OF YONKERS,
NEW YORK

Yonkers Off-Grid City Park



MAYOR MIKE SPANO

YONKERS AWARDED INNOVATION AWARD FOR RENEWABLE ENERGY

